

Wood Green
SIXTH FORM
ACADEMY



SIXTH FORM PROSPECTUS 2025

BELIEVE ACHIEVE SUCCEED

EXPLORE OUR

CONTENTS

A Warm Welcome to our Sixth Form	2
Discover our Pathways	3
Pathway Requirements	4
Planning your Pathways	5
Opportunities in Sixth Form	6

MORE ABOUT OUR SIXTH FORM

Celebrating our Students' Success	7
Discover more about our Higher Education Support	8
Discover our Amazing Facilities	9-10



A WARM WELCOME TO

OUR SIXTH FORM



With over 50 years of experience in providing gold-standard Post-16 education, Wood Green Academy Sixth Form Centre's success is due to its investment in the interests of its students.

Our 'believe, achieve, and succeed' attitude helps students throughout their journey towards attaining their ambitions, and our schoolwide focus on developing independence means that graduates enter Higher Education, apprenticeships or employment with confidence.



WHY WOOD GREEN ACADEMY?
This is your opportunity to be a part of a successful and thriving Sixth Form, which currently stands at over 250 students, all of whom are on Advanced Level courses. Life in the Sixth Form is a pleasant and enriching experience. High standards are set for achievement and progress. Academic progress is monitored and reviewed. All students are expected to show a degree of responsibility, maturity and self-discipline which befits people of their age. We expect all our students to maintain a high standard of conduct and attitude towards others.

“Students in the Sixth Form are exceptionally articulate ambassadors for the school, showing a high degree of maturity, confidence, and commitment.” Ofsted

YOU'RE IN
GOOD HANDS



The prime aim for every student must be to improve their academic qualifications. We have a dedicated, caring and committed team of subject teachers, pastoral tutors, academic coaches and support staff. Our staff are well-qualified, experienced and successful subject specialists, who confidently teach to all levels up to university entrance. We help all students to succeed in a supportive and friendly environment.



Miss D Cavell – Student Support Manager for Sixth Form
Miss L Stocks – Director of Sixth Form
Mrs A Clifton – Post 18 Destinations Manager

DISCOVER OUR PATHWAYS

We offer a diverse curriculum with a wide range of Post-16 subjects that will allow you to combine our pathways. Students can make the decision to follow one pathway or to combine A-level subjects with vocational subjects.

With a variety of sought-after A-level courses such as Mathematics, Chemistry, and Physics, as well as exciting new additions like A-level Photography, our Extended Diploma and Vocational Criminology, there is a pathway to cater for every successful applicant at Wood Green Academy.

Students have the choice of three pathways: A-levels, vocational (including full time courses) or combined (A-levels and vocational courses).

A-LEVEL PATHWAY

Accounting
Art
Biology
Business Studies
Chemistry
Computer Science
Design and Technology
Drama and Theatre
English Language
English Literature
EPQ (Extended Project Qualification)
French
Further Mathematics
Geography
History
Mathematics
Media Studies
Photography
Physical Education
Physics
Psychology
Religious Studies
Sociology

VOCATIONAL LEVEL 3

Business (Single & Double Award)
Criminology
Health & Social Care (Single & Double Award)
ICT
Sport Certificate

VOCATIONAL FULL TIME

Extended Diploma in Business (Triple)
Extended Diploma in Health & Social Care (Triple)



For more information about all the courses such as entry requirements, topics covered, assessment information and progression route please scan the QR Code which will direct you straight to the sixth form pathway page on our website.

PATHWAY REQUIREMENTS



A-LEVEL PATHWAY

Sixth Form entry criteria: a minimum of 5 9 to 5 GCSE grades, which must include a grade 5 or above in either English Language or English Literature. If students do not have a grade 4+ in GCSE Maths they will be required to re-sit this qualification. In addition, the minimum subject entry criteria must be met.

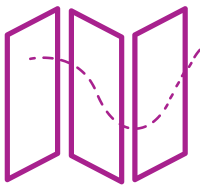
A-LEVEL PATHWAY		
Accounting	GCSE Maths 5+	
Art	GCSE Art & Design 5+	
Biology	GCSE Maths 6+	GCSE Science 6 6 + OR Biology 6+
Business Studies	GCSE Maths 5+	GCSE Business Studies 5+ (if studied)
Chemistry	GCSE Maths 6+	GCSE Science 6 6 + OR Chemistry 6+
Computer Science	GCSE Maths 5+	GCSE Computer Science 5+ (if studied)
Design and Technology	GCSE Design and Technology 5+	
Drama	GCSE Drama 5+ (if studied)	
English Language	GCSE English Language 6+	
English Literature	GCSE English Literature 6+	
French	GCSE French 6+	
Further Maths	GCSE Maths 7+	Students MUST also study A Level Maths
Geography	GCSE Geography 5+	GCSE Maths 5+
History	GCSE History 5+	
Maths	GCSE Maths 6+	
Media Studies	GCSE Media Studies 5+ (if studied)	
Photography	GCSE Art & Design 5+ OR Media Studies 5+ OR Design and Technology 5+	
PE	GCSE Science 4 4+	GCSE PE 5+ OR BTEC Sport Merit+
Physics	GCSE Maths 6+	GCSE Science 6 6+ OR Physics 6+
Psychology	GCSE Maths 5+	GCSE Psychology 5+ (if studied)
Religious Studies	GCSE Religious Studies 5+ (if studied)	
Sociology	GCSE Sociology 5+ (if studied)	

VOCATIONAL PATHWAY

The Sixth Form entry criteria is a minimum of 5 GCSE grades 9 to 4, which must include a grade 4 or above in Maths and either English Language or English Literature. In addition, the minimum subject entry criteria must be met.

VOCATIONAL PATHWAY	
Business (Single & Double)	GCSE Business Studies 4+ (if studied)
Criminology	GCSE English 5+
Health & Social Care (Single & Double)	Level 2 Health and Social Care Merit + (if studied)
ICT	Level 2 ICT Merit+ (if studied)
Sport Certificate	GCSE PE 5+ OR BTEC Sport Merit+

FULL TIME VOCATIONAL PATHWAY	
Business (Triple)	GCSE Business Studies 4+ (if studied)
Health & Social Care (Triple)	Level 2 Health and Social Care Merit+ (if studied)



Applicants may choose one subject from each option block, and must be studying a minimum of three A-level subjects if following an academic pathway. Applicants can choose three subjects from each vocational block. Students can combine vocational and A-level pathways if the entry requirements are met. Students opting to study a full time vocational Extended Diploma are not required to choose any other subjects.

Please note that, if choosing to study business (double), then you are unable to choose a subject where the single award is present. If choosing the full time vocational Extended Diploma Business, no other subject needs to be chosen.

Block A	Block B	Block C	Block D	Block E
Further Maths	Art	Business Studies	Accounting	Biology
	Biology	Chemistry	Chemistry	Business Studies
	Computer Science	English Literature	French	Design and Technology
	Drama	Physics	Mathematics	English Language
	Geography	Sociology	Media Studies	History
	Mathematics		PE	Photography
	RE		Psychology	Psychology
	Business Double	ICT	Health & Social Care Double	Business Single*
	Criminology	Sport		Health and Social Care Single*
		Health & Social Care Double		
Full Time Extended Diploma in Business (triple) Blocks B, D and E				
Diploma in Business (Double) Block B & E				
Full Time Extended Diploma in Health & Social Care (triple) Blocks C, D & E				
Diploma In Health & Social Care (Double) blocks C & D				

*These option subjects are under review and the course availability may change.
Please note that all courses are subject to viable student numbers and the subjects in each option block may change.

ENRICHMENT

We have a wide range of enrichment and extracurricular activities to suit everyone, from supporting lower school classes to charity events. There are many opportunities for everyone to get involved in school life:

- Reading Mentoring
- Work Experience
- House Captains
- Lead Ambassadors
- Visits to Universities
- Change Your Mind Ambassadors
- Well-being Sessions



SIXTH FORM AMBASSADORS

The ambassador programme at Wood Green Academy gives students an opportunity to develop a range of skills that will prepare them for life after Year 13.

Students get involved in taking a lead role in the delivery of activities, charity events and the mentoring of younger students. The successful applicants will act as internal and external ambassadors of the school and will act as role models for all students at Wood Green Academy.

Ambassadors have previously taken part in the organisation of events to raise money for 'Movember' Macmillan Cancer support, the 'British Heart Foundation' and 'Smile For Joel'. They also play an important part in ensuring that the views of sixth form students are shared appropriately and through the correct channels and structures.

The Sixth Form ambassadors led a session on the Year 12 induction days, sharing their experiences of Wood Green Academy with prospective students, giving key tips on the transition up to Post-16 studies. Sixth Form ambassadors have also visited the Houses of Parliament.

BURSARY

The Sixth Form runs a financial bursary scheme which students will be informed about once they have enrolled as a student.



CELEBRATING OUR

STUDENTS' SUCCESS



POST-18 CHOICES

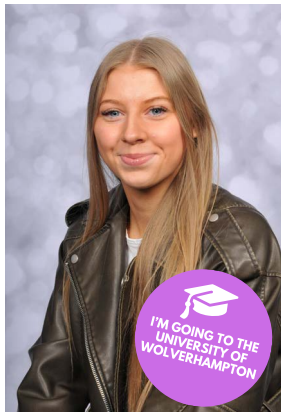
We are a centre of excellence for A-level and vocational courses. We would like to take this opportunity to congratulate all our students on their continued hard work which has been reflected through this year's outstanding results.

We are very proud of the part we play in helping students go on to university and careers of their choice.

There were 84 students who successfully obtained a university place across 28 different Higher Education institutions including:

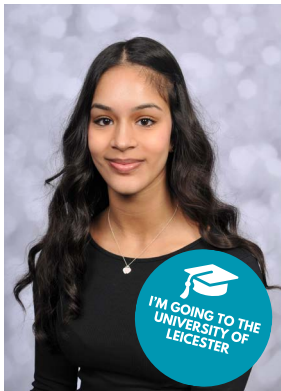


OTHER STUDENTS WENT ON TO EMPLOYMENT AND HIGHER LEVEL APPRENTICESHIPS.



My time at Sixth Form was pivotal in shaping my academic journey and preparing me for higher education. Having been at Wood Green Academy since Year 7, I initially chose to stay for Sixth Form due to the exceptional support I received from the Health and Social Care Department throughout my GCSE studies. The Level 3 OCR Extended Diploma in Health and Social Care I studied in Years 12 and 13 embeds the understanding of numerous career paths within the sector and provided me with a solid foundation of knowledge that has enabled me to pursue my future career. The department's commitment was evident through its provision of after-school sessions, quiet study spaces, comprehensive revision materials, and ongoing support with course content – all of which significantly contributed to my academic success. The Sixth Form further enriched my time with valuable work experience, personalised career guidance and a wide array of both extracurricular and course-based opportunities. The unwavering support from my year leader, the dedicated Sixth Form team and the Health and Social Care Department also created a nurturing environment that was key to my achievements and has thoroughly prepared me for my future – I achieved three Distinction* grades and will be pursuing a BA (Hons) degree at the University of Wolverhampton.

- LUCY NELSON

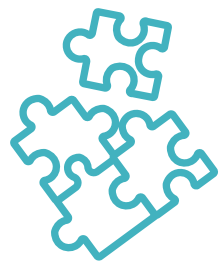


I found A-levels to be a challenging step-up from GCSEs. However, the guidance provided by my teachers and the Sixth Form team meant I was able to study subjects that would best equip me to achieve my lifelong ambition of studying a Law degree after Year 13. I studied English Literature, Psychology and Sociology, and found that the Sixth Form encourages an environment of responsibility: being willing to put in extra effort to overcome the challenges of A-levels means that teachers and the Sixth Form team go the extra mile to support you. I am very grateful to them all for the ways that they have gone above and beyond for me, especially during my personal challenges. Sixth Form also offers numerous opportunities to prepare you for further education, such as The Access Project, an Extended Project Qualification, and leadership roles such as being on the Student Ambassador team. Also, I had the chance to build personal skills through forming new friendships and networking on school trips. The support from all my teachers and the Sixth Form team throughout my personal and health challenges during Year 13 has helped me secure my place studying Law at the University of Leicester.

- LAUREN MAHAY

DISCOVER MORE ABOUT OUR

HIGHER EDUCATION SUPPORT



At Wood Green Academy, we are keen to support students with the next steps in their education. We work with two external organisations who provide guidance with decision-making when it comes to university choices.

THE ACCESS PROJECT

Wood Green Academy is one of 35 schools in the country that works with The Access Project. We have a University Access Officer in school two days each week who can offer advice and guidance with a focus on applications to top universities.



CORE PROGRAMME

20 students in Years 12 and 13 have access to specific support that helps them to access top universities through a unique combination of free, subject-specific tuition and in-school mentoring. They work with the students to help them produce quality applications, achieve the grades required, and go on to make a successful transition to university.

SOCIETIES

Any student in Year 12 who is interested in studying Medicine or Dentistry or plans to study higher education at Oxford or Cambridge, can apply to be a part of The Access Project societies. The societies provide specific support to form a competitive application to these courses and institutions.



My experience at Wood Green Academy Sixth Form was invaluable. I loved the level of independence provided to Post-16 pupils and the level of responsibility expected of me was great preparation for my university career. As an external student who didn't join this school's community until Year 12, I was pleasantly surprised at how easy it was to create a good rapport with my teachers; this helped me to feel more relaxed and made my lessons enjoyable. Whilst giving me more freedom than Years 7-11, Wood Green Academy also offered lots of support when I required it, such as help with my Post-18 options from Miss Stocks, The Access Project and my Student Support Manager. Having this guidance allowed me to focus more on my A-levels (Biology, Chemistry and Psychology) – these were challenging subjects, but help from my teachers meant I could manage my workload. Furthermore, my teachers provided me with revision material to consolidate my learning, and I had the opportunity to study outside the classroom using the Sixth Form-only dedicated study space.

I loved my time at Wood Green Academy Sixth Form – I'm very thankful for all the opportunities that were available to me and I will cherish all the wonderful memories I made. I will be studying Psychology at King's College, London, which wouldn't have been possible without the support of my amazing teachers.

- NAEEMAH KHATUN RAZA

AMAZING FACILITIES

OUR FACILITIES ARE MADE TO PROVIDE YOU WITH A MODERN LEARNING AND SOCIAL ENVIRONMENT.

Our Sixth Form students benefit from a newly-refurbished Common Room. This is an area to relax and socialise between studying, and helps our students to feel refreshed and ready to learn – whether they are chatting with their peers, making use of the wide, flat screen television, or simply having a cup of tea.

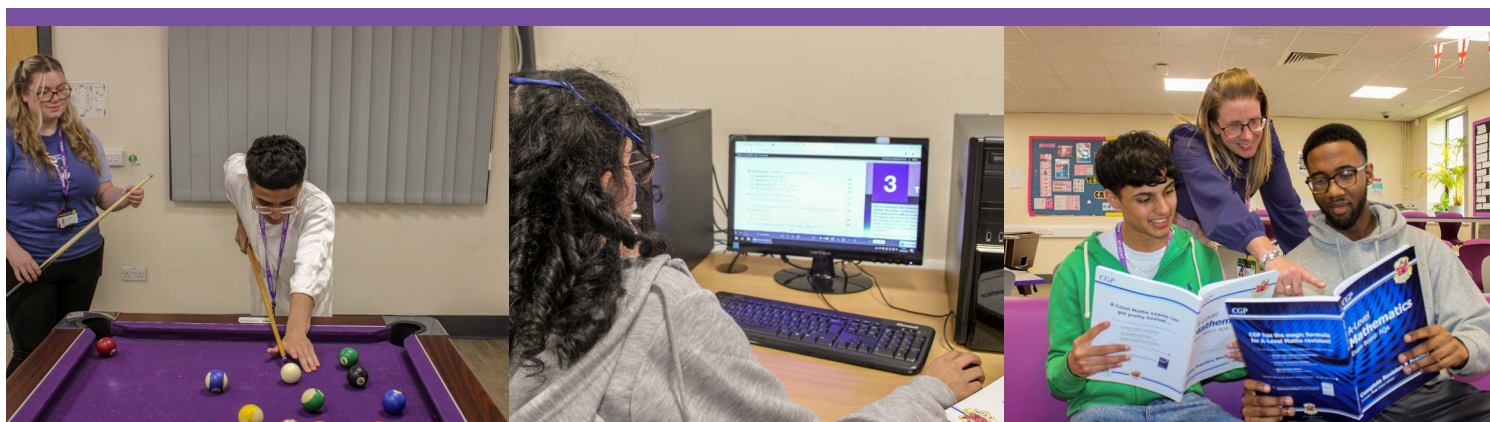
ICT SUITES & EQUIPMENT

The Sixth Form area has two additional study rooms: an ICT Suite fully-equipped with computers and printing facilities, and another study space overlooking the school field, where students have the opportunity to focus on their work in a quiet and reflective environment. All Sixth Form students are also provided with a device such as a laptop to aid them in their studies.

THE LEARNING HUB

The Learning Hub is a wonderful multi-purpose space: we host a library of over 9000 books to aid with personal and academic growth; we have a newly updated computer suite with access to printing; the Learning Hub team facilitates tutoring and guided revision sessions as well as allowing time for independent study. As the “hub” of the school, the space is also used to host various themed events throughout the year, all of which contribute to the culture of learning and development that Wood Green Academy is known for.

A safe and inclusive space for all, The Learning Hub is open to Sixth Form students before, during and after school.



“As an ambitious student, it was amazing to be in an environment that has challenged me in my studies as well as given me the opportunity to cultivate skills that have helped me post Sixth Form.”
- Chinia Hutchinson

Wood Green Academy Sixth Form

Wood Green Road

Wednesbury

West Midlands

WS10 9QU



Contact Information

Phone: 0121 556 4131

Email: sixthform@woodgreenacademy.co.uk

Our Socials



www.woodgreenacademy.co.uk
