



Wood Green Academy

AND SIXTH FORM CENTRE

Wood Green Road
WEDNESBURY
West Midlands
WS10 9QU

0121 556 4131
0121 506 4609
www.woodgreenacademy.co.uk
admin@woodgreenacademy.co.uk

Headteacher: Mr J.Topham B.Sc.(Hons), M.Sc., NPQH

Dear Parent/Guardian,

As the festive season approaches, bringing joy and excitement, we want to emphasize the importance of maintaining regular school attendance during the final week before the Christmas break. This period is essential for academic progress, the completion of coursework, and a smooth transition into the holiday period.

Attached, you will find detailed information about the lessons and activities planned for this important week. As you'll see, any missed time during this week could mean missing out on key aspects of your child's education.

To encourage and celebrate excellent attendance, our Attendance Team is excited to announce **Wood Green's "5 Days of Christmas"** initiative. In the lead-up to the holiday period, students with strong attendance will have the chance to win rewards, culminating in a **prize draw during the final assembly** with Amazon vouchers up for grabs. Many of our students have been working hard this half-term to maintain unbroken attendance, putting them in the running for these prizes.

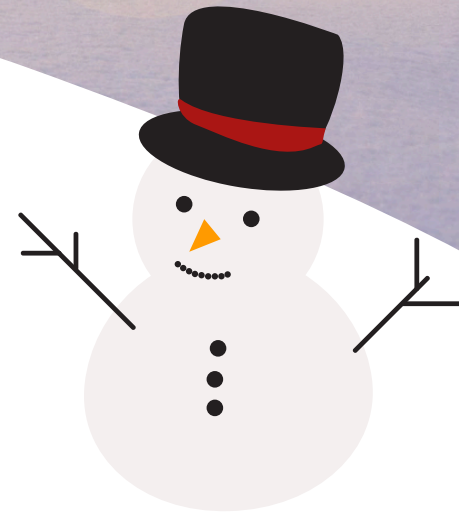
We are especially proud of our Year 11 students, who continue to demonstrate commitment by attending school to complete their mock examinations in preparation for their GCSEs in the coming months.

Thank you for your ongoing support in ensuring that your child benefits fully from their education during this crucial time.

Many thanks

Mr J Topham
Headteacher

FINAL WEEK OF TERM 2024–2025



FINAL WEEK OF TERM 2024–2025

Subject	Year 7	Year 8	Year 9	Year 10	Year 11	Year 12	Year 13
Art & Design	End of unit assessments		Skill Workshops- Mixed Media	NEA Completion	Mock Exam Taking place. NEA Completion	Skill workshops- Scale	NEA completion
PE	Core lessons						
PE GCSE / KS5			Application of Knowledge	Psychology in Sport	Review of mock papers	BTEC Sport: Revision for January exam	BTEC Sport: Revision for January exam. A-Level PE: NEA completion & revision for EUA
Business			Chocolate Bar - Show down	Knowledge based assessments			
Dance			Performing & assessment of practiced choreography	Component 2 prep	Component 3 prep		
Biology			B2 curriculum including practical work	B3 preparing and sitting End of topic Assessment	Mock Exam	Continuing Module 2.6 and 2.4	Mock Exam and continuing Module 6
Chemistry			Separating Mixtures Practical Work	Curriculum based practical work	Mock Exams	Continuing Module 3.1 and 3.2	Mock Exams
Physics			P4 Magnetism End of Unit assessment	P3 - Electricity and Magnetism End of Unit assessment	Mock Exam DIRT	Module 8 - Charge and Current End of Unit assessment	Mock Exam DIRT
Criminology						Final preparations for controlled assessment in January.	Unit 4 examination content being taught.
Computer science / Computing	Review of Computational Thinking Assessment	Review of Binary Assessment	Core Careers Week . CS - Python Challenge	CS - Python Challenge	Review of Mock papers	End of unit assessment	Coursework Deadlines

FINAL WEEK OF TERM 2024–2025

Subject	Year 7	Year 8	Year 9	Year 10	Year 11	Year 12	Year 13
ICT	Review of Computational Thinking Assessment	Review of Binary Assessment	Lessons on Unit 1 NEA	Spreadsheet Skills	Review of Mock papers	Review of LO2 Assessment	Coursework Deadlines
Drama	Christmas/holiday themed performance	Devising assessment	Brechtian Performance	Blood Brothers exam practice	Mock paper analysis		
DT	End of Unit Assessment.				Ongoing NEA work		Ongoing NEA work
English	Creative Writing Assessment	Assessment preparation for Midpoint in January	Shakespeare/ Creative Writing Assessment	Macbeth endpoint assessment	GCSE English Language Paper 2 relearning and revision		
Maths	Recovery week of topics identified from assessments		Unit test of chapter 3	Recovery week of topics identified from assessments	Recovery week of topics identified from mock exam	Chapters 10.1 and 3.2	Analysis of topics from mock exam
French	Culture: to explore how Christmas is celebrated in France and other French-speaking countries		Module 2: Describing my family, my family relationships and what activities I do with my family.		Feedback from mock exams (Speaking / Reading). Setting targets for further improvement		
German		Cultural topic – Christmas in Germany-speaking countries-linked to GCSE Theme 2.		GCSE Theme 2: Revising modal verbs and talking about German Christmas traditions.			
Geography	Year 7 Question 2 Physical Landscapes	Year 8 Question 2 Wildfires	Development Dynamics India Case Study and Assessment	Climate Change, Tropical Cyclones and Assessment	Paper 3 exam content	Coasts Assessment	Population and the Environment
Health and Social			R033 coursework deadline.	R033 Coursework deadline	R032 exam skills and techniques and completion of L03 content.	Covering key examination content for units 2,3,4,6,7, and 25. Coursework feedback and amendments units 11,24 and 5	Coursework feedback and amendments. Setting of new coursework tasks.
Food Technology	Christmas assessed practical						

FINAL WEEK OF TERM 2024–2025

Subject	Year 7	Year 8	Year 9	Year 10	Year 11	Year 12	Year 13
History	Finishing the unit of work	Christmas in the trenches	18th and 19th C medicine	Topic 3 Elizabethan England assessment	Mock exams/rise of Hitler	Continuing with Henry VII and Weimar Germany	Continuing with NEA, Nazi Germany and Elizabeth I
Media Studies			DIRT & re-learning: Media Language & Audiences	DIRT & re-learning: Paper 1 Section A	Internal exam preparation	End of unit assessment: Paper 1 Section A	Exam reflection & Paper 1 re-learning
Music	Christmas Concert rehearsals. Learning christmas music in lessons.			Christmas Concert rehearsals. Composing NEA.	Christmas Concert rehearsals. Mock exams		Christmas Concert rehearsals. Mock exams
Psychology			Perception Assessment-Preparation/Assessment/Feedback	Social Influence Assessment-Preparation/Assessment/Feedback	Paper 1 Revision	Attachment topic content	Relationships and internal examinations
RE/RS	Introduction to new unit of work		Introduction to Christian Practices	Continuation of Themes	Buddhist Beliefs revision/ Review of Mock papers		Continuation of Developments in Christian Thought content
Science	Assessment week (January) - Science exam preparation	Consolidation of Autumn term modules and links to new modules.	Science End of Term Assessments				
Sociology			Consolidation of Autumn term modules and links to new modules.	Preparation for Education Assessment	Paper 1 Revision	Educational Policies lessons	Paper 3 lessons-Crime and Deviance